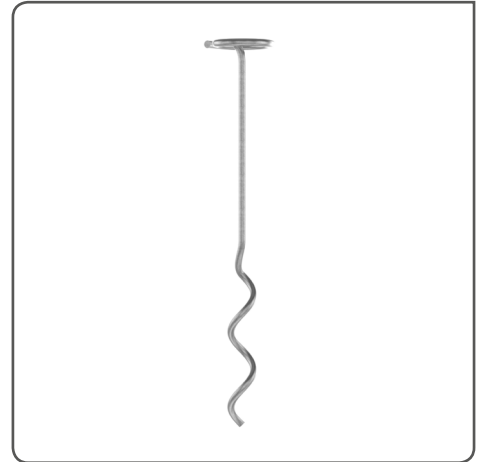


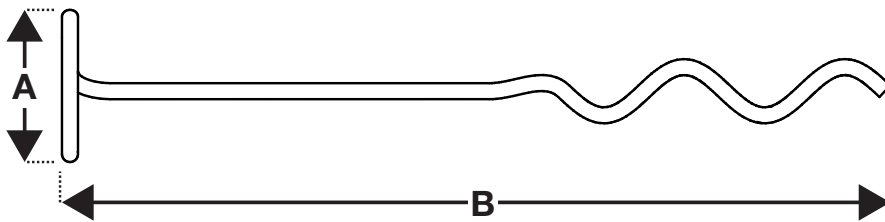
The TL-P2 holds all types of erosion control and soil stabilisation blanket matting securely in place

## FEATURES / BENEFITS

- Quick and easy to install with a standard electric drill
- Superior performance when compared to traditional straight pins
- Eliminates time & labour associated with replacing or reworking pins that have become loose or pulled out altogether
- The patent pending innovative design of the installation chuck allows the TL-P2 to be installed to full depth without damaging the mat
- Integrated top coil form eliminates the need for a washer, spreads the load and helps secure the matting in place
- Extended tip allows faster placement and enhanced interaction with matting on install
- Specifically designed for use in tougher soils



## SPECIFICATION



Dimension	Length (mm)
A	35
B	200

## INSTALLATION TOOLS



Chuck  
(90 mm)

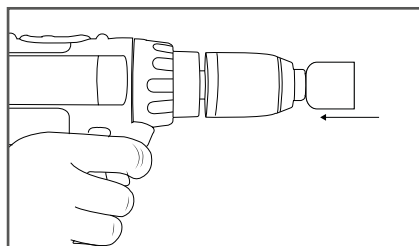


Extended  
Chuck  
(490 mm)

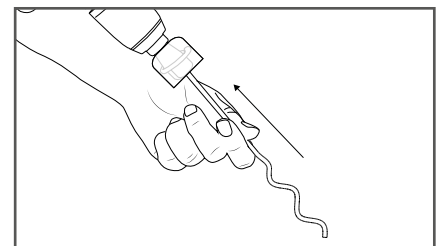
For more information contact us or visit our website - [www.gripple.com](http://www.gripple.com)

## INSTALLATION

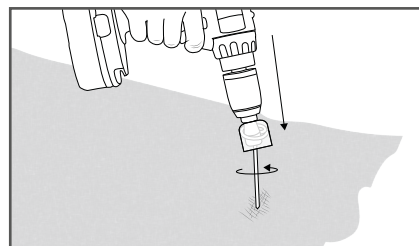
1.



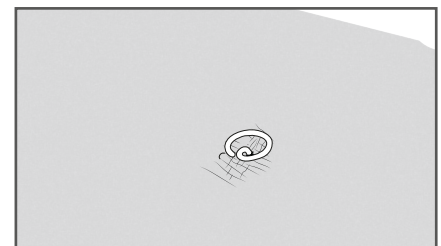
2.



3.



4.



For more information on how to install the TL-P2 visit our Youtube channel - GrippleTV. Alternatively see Installation Guidelines & Procedures.

## CHUCK ASSEMBLY

